

WH 8

WNFI: 50,17m²
BALKON: 11,13m²
SUMME: 61,30m²

WH 7

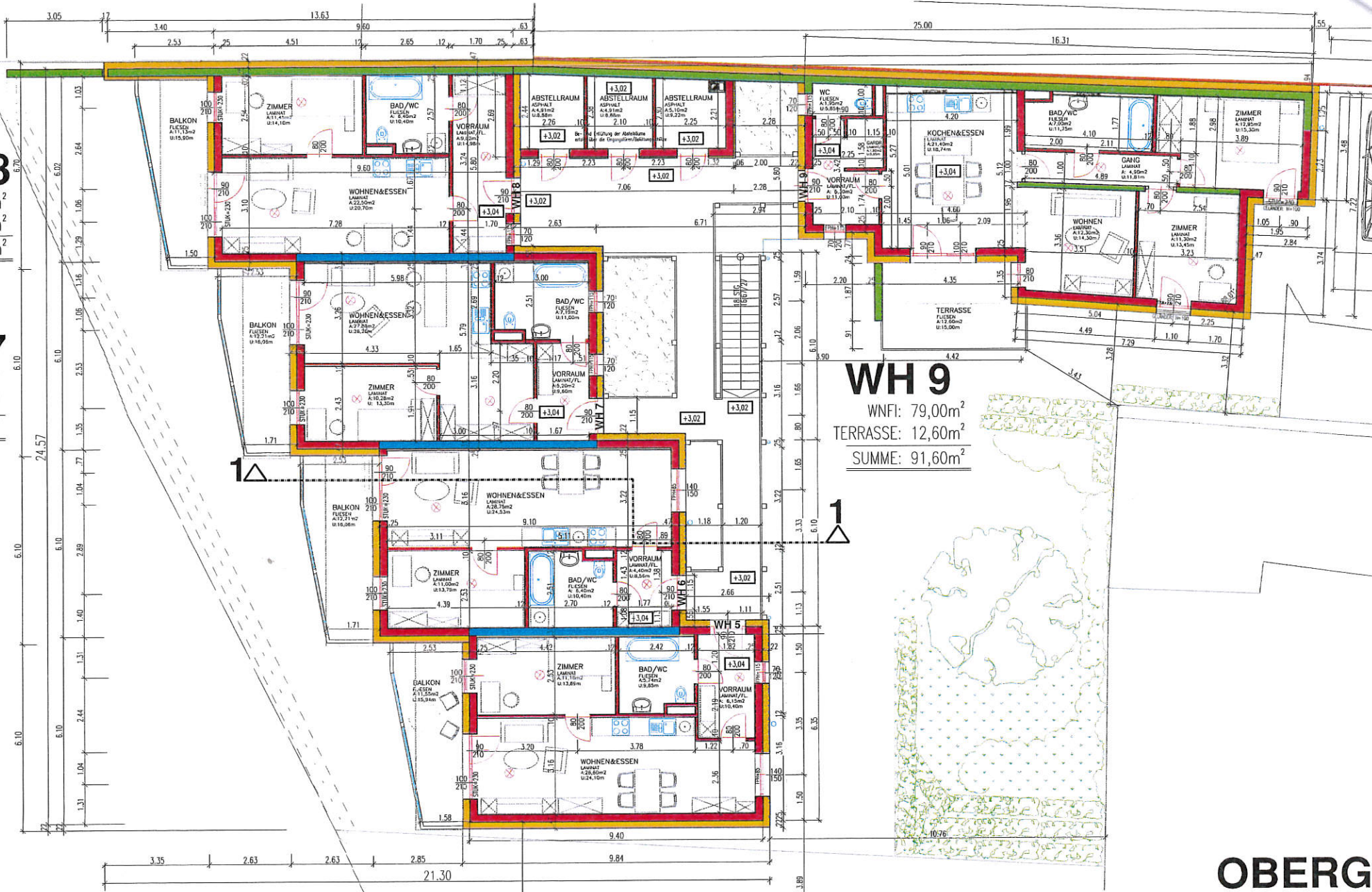
WNFI: 50,56m²
BALKON: 12,21m²
SUMME: 62,77m²

WH 6

WNFI: 50,55m²
BALKON: 12,21m²
SUMME: 62,76m²

WH 5

WNFI: 49,65m²
BALKON: 11,55m²
SUMME: 61,20m²



OBERG